

Water Pump Replacement



Replacement of the Water Pump should only be attempted/ completed by an certified contractor/installer and after error code has been diagnosed to clearly indicate a Pump failure.

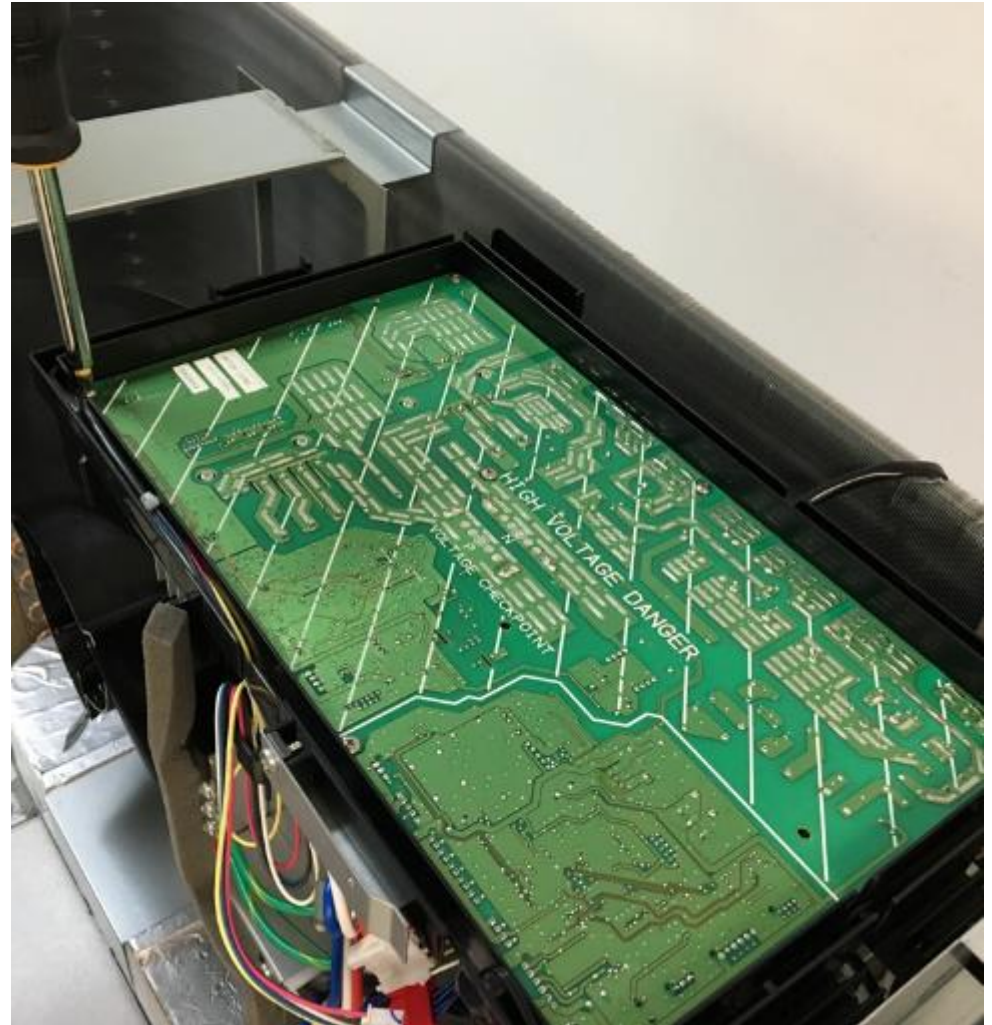
Tools required :

Standard Phillips screwdriver

Replacement Water Pump

Optional:

Small plastic bags or containers for screws



If you have questions or need advice during the PCB replacement process
Please call 1-844-726-3262 x 403



Water Pump Replacement



Step 1:

**Disconnect unit from Power –
Lock out power supply**

**Close Water Shut off valves
and Drain Water from Heat
Pump**

Remove unit Top cover, 4 x Philips
head screws

TIP – Note which way Top cover
installs, label to rear on LHS

Remove unit Front cover, 5 x Philips
head screws

TIP - Front cover has locating tabs,
pull up and slightly away to remove
front cover once the screws are
removed



Water Pump Replacement



Step 2:

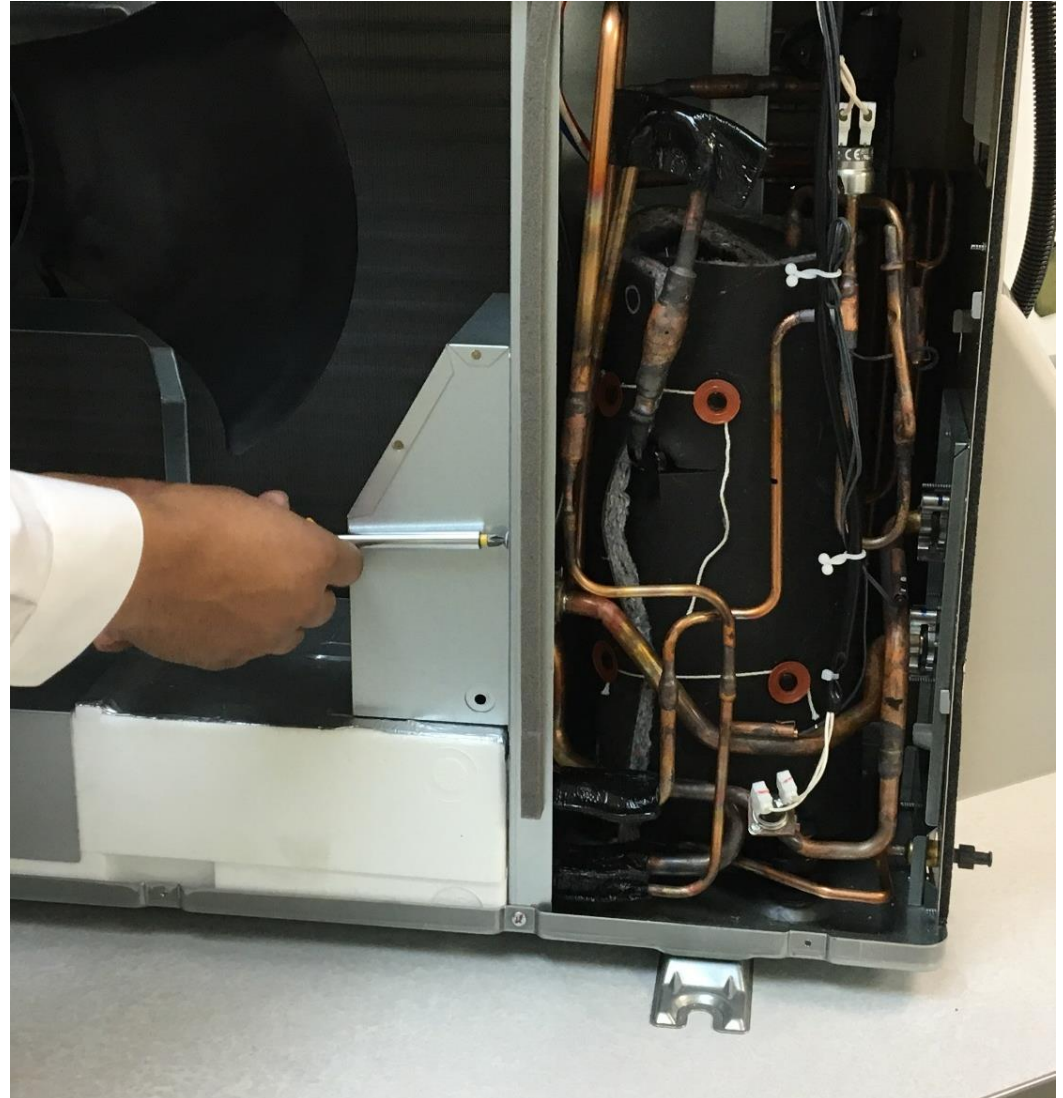
Remove Pump Cover

3 Philips head Screws

TIP – A long handled screwdriver is easier to use than a cordless drill type

Unit Fan blade may need to be rotated to access screws

Note : Store screws carefully, Pump Cover and mounting bracket screws are different to Cover and Lid screws



SANCO₂ Water Pump Replacement



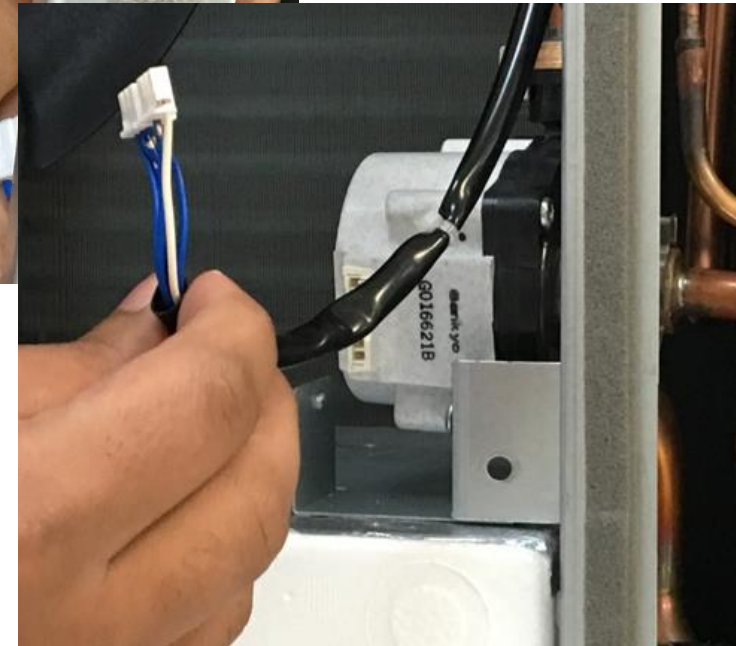
Step 3:

Carefully remove Pipe Clips holding piping to Pump Inlet and Outlet

TIP – Bending or warping of the clips during removal may lead to gaps and could cause water leaks

Remove Wiring Plug from Pump

Depress the white plastic tab in the center and gently pull it from the pump.



Water Pump Replacement

Step 4:

Carefully pull pipes out of the Pump connections and remove Pump from the unit

Inspect both Inlet & Outlet connection O-Rings for nicks, tears, gouges, etc

Replace O-Rings if necessary



Water Pump Replacement

Step 5:

Remove Pump from mounting bracket – 2 Philips head screws

Mount bracket onto replacement pump and fit into unit



Water Pump Replacement

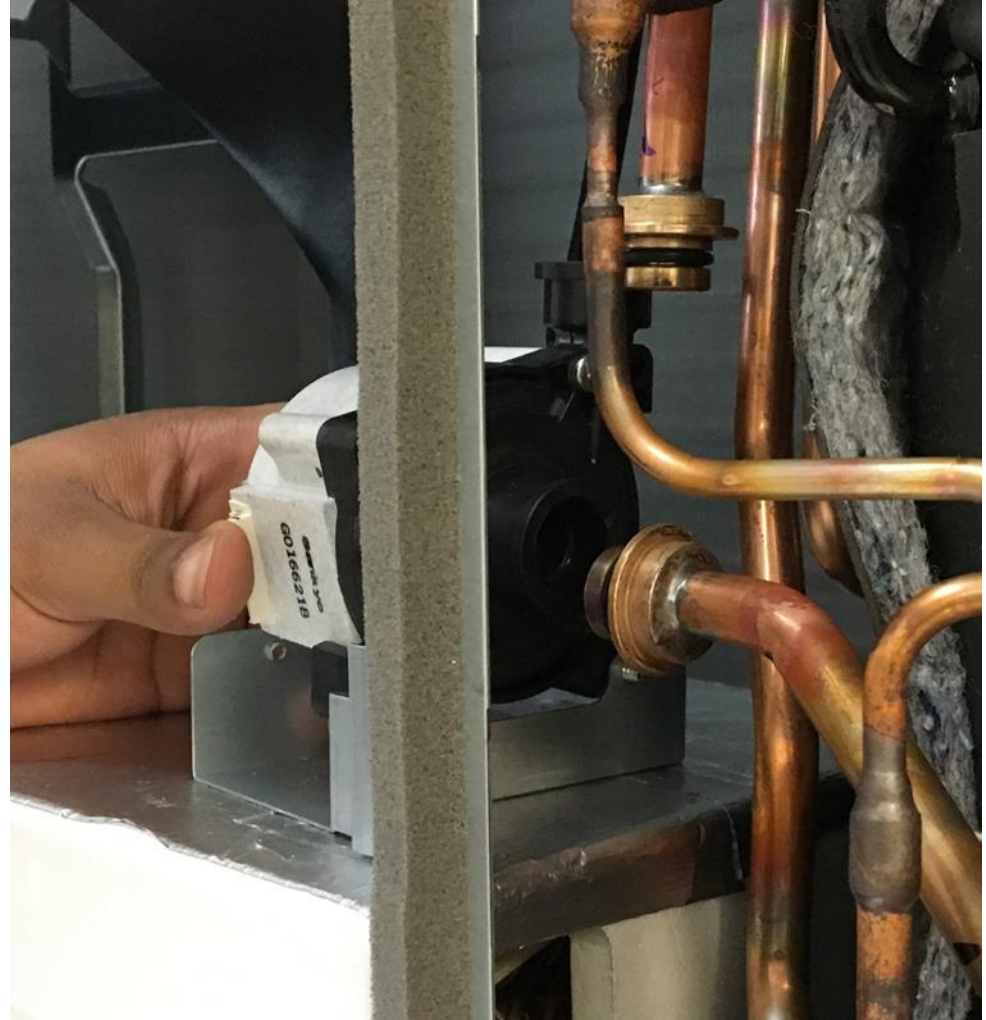
Step 6:

Carefully orient replacement Pump to correct location

Very Gently push in Inlet and Outlet Water pipes into the Pump connections

Secure connections using Pipe Clips, ensure connections are flush for a water tight seal

Replace Pump Cover and tighten 3 screws securing it in place



Water Pump Replacement



Step 7:

Reattach the front cover and secure using the 5 screws. TIP – locate tabs into slots first when reinstalling cover

Reattach the lid to the unit using the 4 screws. TIP – install lid on coil end of unit first, then compressor end

Open Water Valves and fill Heat Pump

Open Bleed screws to remove air from Heat Pump

Restore power to the unit

Based on the tank temperature unit may or may not run. Run faucet until unit starts

Check display to ensure no error codes are displayed

