

SANCO₂ PCB Replacement



Replacement of the PCB should only be attempted/ completed by an certified contractor/installer and after error code has been diagnosed to clearly indicate a PCB failure.

Tools required :

Standard Phillips screwdriver

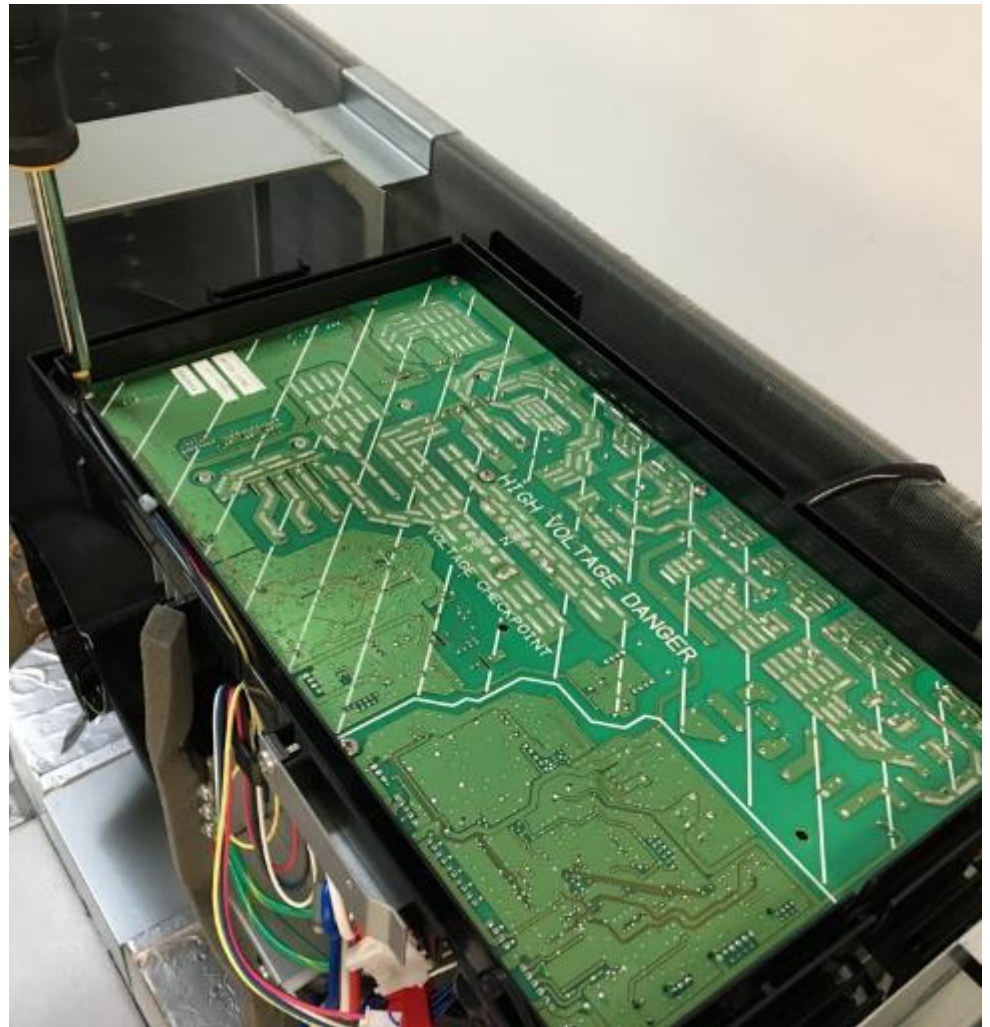
Replacement PCB

Side Cutters or knife

Labels to tag wiring

Optional:

Small plastic bags or containers for screws



If you have questions or need advice during the PCB replacement process

Please call 1-844-726-3262 x 403



SANCO₂ PCB Replacement



Step 1:

Disconnect unit from Power – Lock out power supply

Remove unit Top cover, 4 x Philips head screws

TIP – Note which way Top cover installs, label to rear on LHS

Remove unit Front cover, 5 x Philips head screws

TIP - Front cover has locating tabs, pull up and slightly away to remove front cover once the screws are removed

Note : Store screws carefully, different parts have different screw diameters & lengths

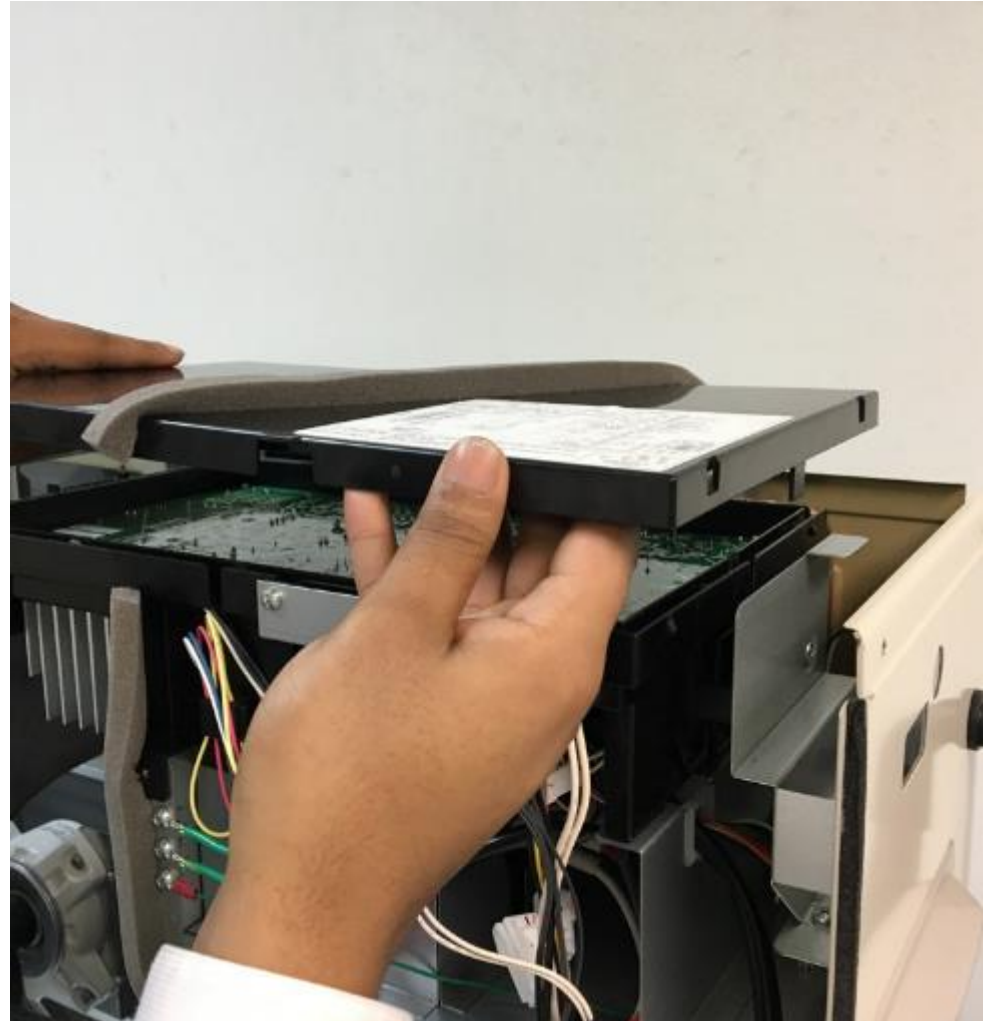


SANCO₂ PCB Replacement



Step 2:

Remove PCB cover by pushing down on tab located on LHS and lifting cover up



SANCO₂ PCB Replacement



Step 3:

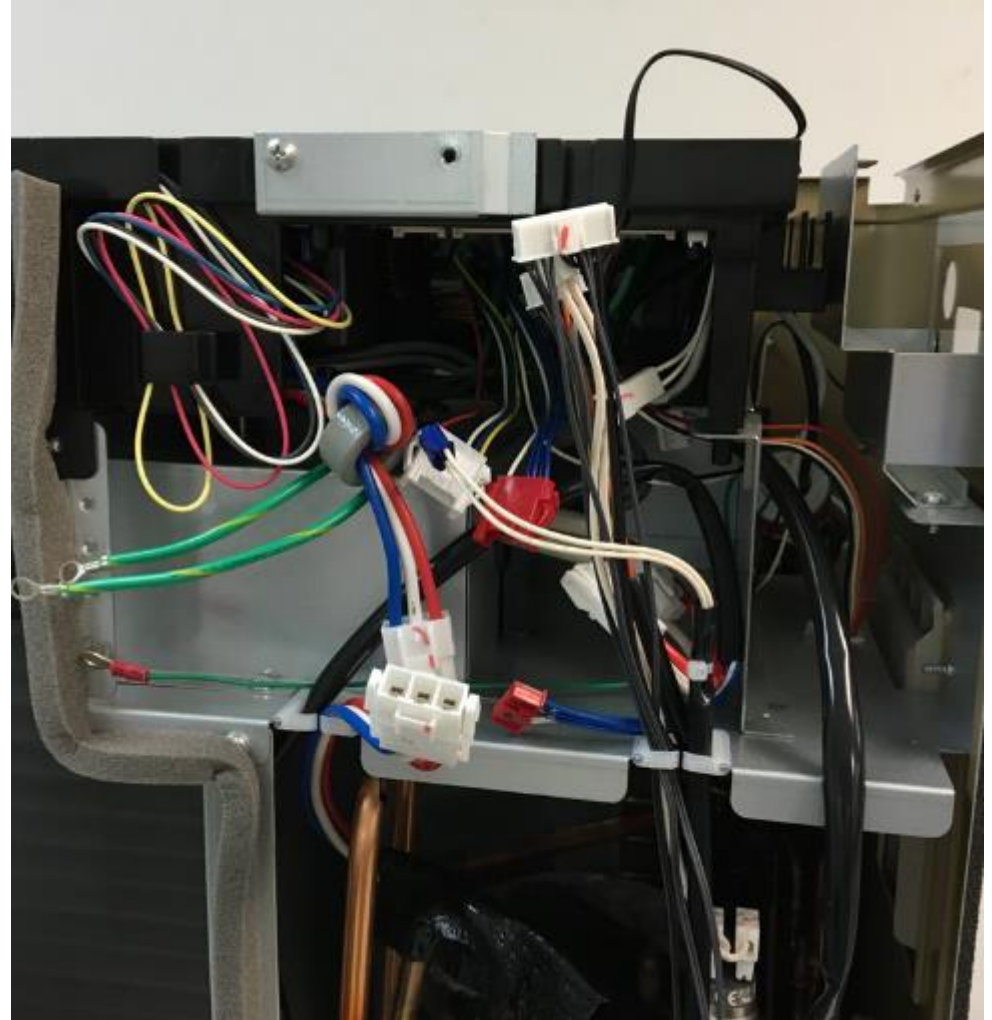
NOTE: Wiring connection plugs to the PCB are designed that they can only fit back onto the PCB in the correct location

To remove a wiring connection plug, depress the plastic tab in the center of the plug and pull plug away from the pins.

Some plugs require squeezing both plastic tabs on the plug sides then pull

Ground screws use Philip head screws

Disconnect all electrical plugs and ground wires from PCB.



SANCO₂ PCB Replacement



Step 4:

Remove Electrical Box front cover (1 Philips head)

Remove plastic cover from terminals

Remove Field wiring from terminals

Remove Factory wiring from terminals

Remove Electrical box from the side of the unit

Note : Tag all wiring to ensure they are correctly rewired to the terminal block



SANCO₂ PCB Replacement

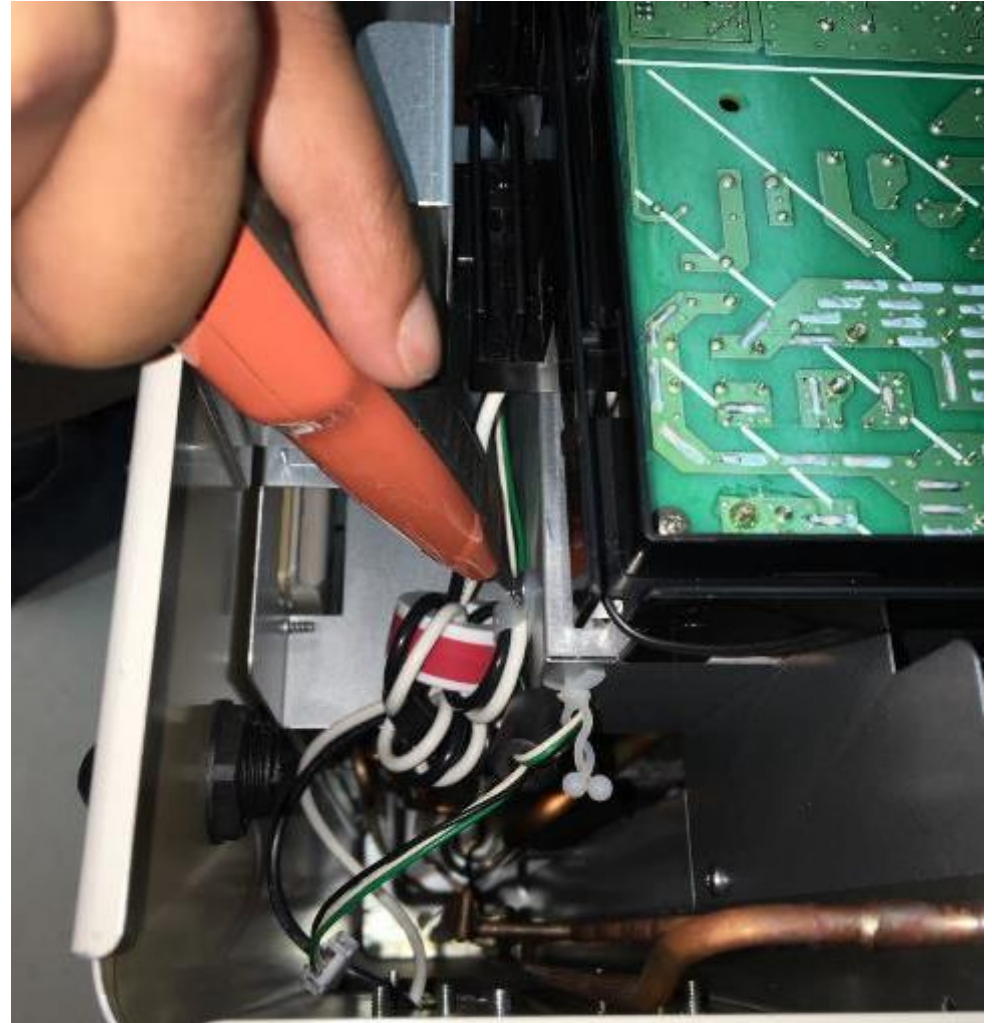


Step 5:

Locate Toroid wired on the main power connection to the PCB

Cut plastic wire retaining clip securing the power wiring

Note : This clip is required to hold wiring during the unit shipping – not replacing the clip will have no effect on unit operation



SANCO₂ PCB Replacement



Step 6:

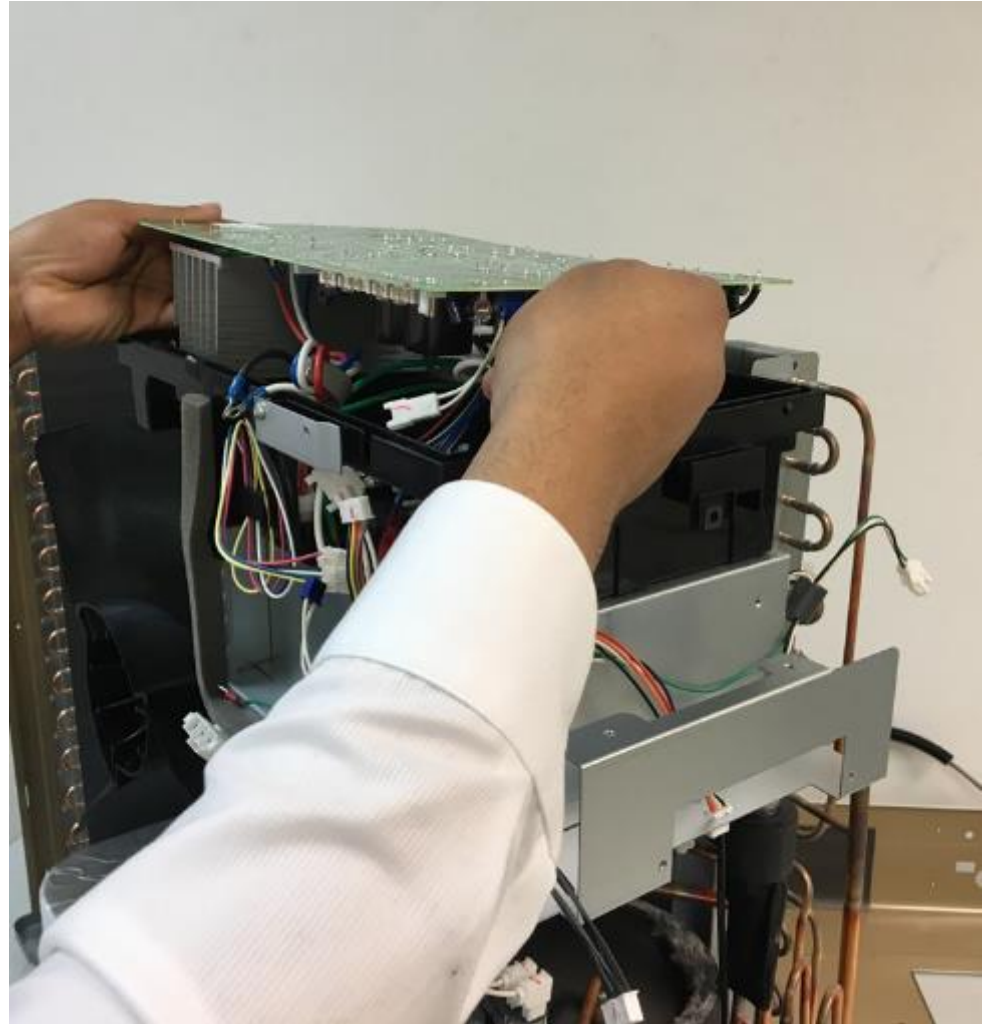
Ensure all wiring connections are removed from the PCB and wiring is rerouted so it will not prevent PCB from being removed

Remove PCB from Heat Pump and discard appropriately

Install replacement PCB in unit

Connect wiring to PCB taking care to ensure wires are routed & connected correctly

Re-install Electric Box & Power wiring to terminals



SANCO₂ Water Pump Replacement



Step 7:

Reattach the front cover and secure using the 5 screws

TIP – locate tabs into slots first when reinstalling cover

Reattach the lid to the unit using the 4 screws

TIP – install lid on coil end of unit first, then compressor end

Restore power to the unit

Complete PCB set up and set Water Temperature, Block Out timer etc to previous unit settings

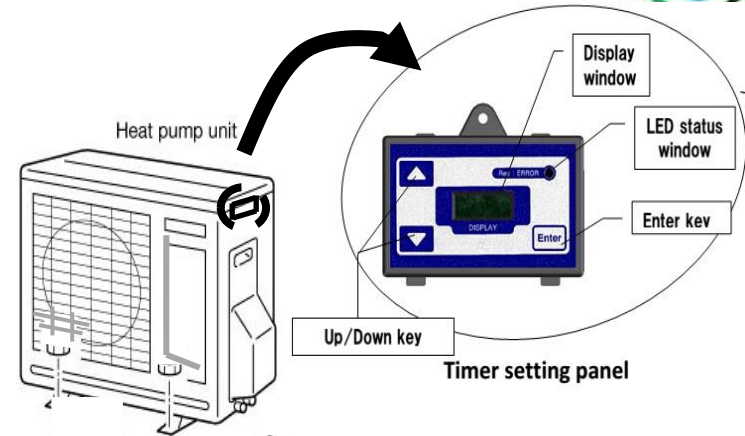
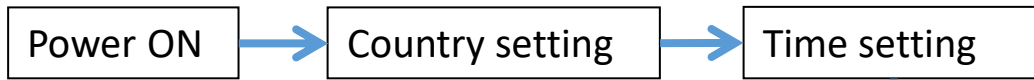


SANCO₂ PCB Replacement



Set Up:

On initial power up new PCB will require the correct Country Code to be entered



Choices are :

- AUSTRALIA (°C English)
- USA (°F English)
- CHN (°C Chinese)
- FRA (°C French)

Use Down arrow then ENTER to select country

